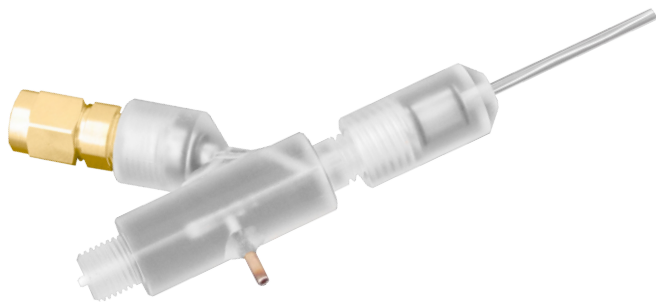


Opto-Pipette Holder

LIGHT STIMULATION OF YOUR SPECIMEN

Try some new and benefitting assets with our new Opto-Pipette Holder and excite your specimen and your results.



Benefits

- Light stimulation of your specimen while recording currents or voltages with your S-Probe
- Straight insertion of your optical fibre into the pipette holder minimizes the risk of broken fibres
- Side-port insertion of the probe electrode
- Ceramic ferrule and optical fibre (200 μm) included

Specifications

- Made of low-noise polycarbonate
- Takes up optical fibres with 50 - 400 μm diameter
- 40° side-port to connect S-Probe
- Low-weight remote pre-amplifier connection possible
- Accepts 1.5 mm OD glass electrodes
- 1x 250 μm (OD) teflon-coated silver wire included



PRODUCT INFORMATION

OPTO-PIPETTE HOLDER SMA-TYPE 1.5 MM OD (895295).
SMA-TYPE CONNECTOR DOES ONLY ACCEPT S-PROBE (895137). USAGE OF SMA FIBRE HOLDER (895290) IS ESSENTIAL.



Theta-Pipette Holder

TWO SPHERES OF ACTION

Study specimen heterogeneity in terms of spatial and temporal resolution.



Benefits

- Use your trusted theta glass electrodes
- Connect two S-Probes from an EPC 10 USB Double amplifier
- Easy introduction of both electrodes
- Manifold usage for chemical scanning of biological specimens in combination with scanning probe microscopes such as EIProScan
- Allows to perform experiments with high spatial and temporal resolution

Specifications

- Made of low-noise polycarbonate
- 40° side-port to connect S-Probe
- Low-weight remote pre-amplifier connection possible
- 2x Teflon-coated silver wires included



PRODUCT INFORMATION

THETA-PIPETTE HOLDER SMA-TYPE 1.2 MM OD (895296); THETA-PIPETTE HOLDER SMA-TYPE 1.5 MM OD (895297); THETA-PIPETTE HOLDER SMA-TYPE 2.0 MM OD (895298). SMA-TYPE CONNECTOR DOES ONLY ACCEPT S-PROBE (895137).