

S-Probe Headstage

FOR PATCH CLAMP AMPLIFIERS AND POTENTIOSTATS



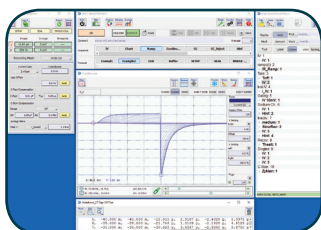
Features & Benefits:

- Extremely small size (49 x 16.5 x 14 mm)
- Weighs only 24 grams
- Flexible cable for reduced cable stress
- Bath sensor option
- Thread-based connector to pipette holder for safer electrical connection with microelectrodes

The S-Probe headstage is technically identical to the 3-Electrode Mode headstage but with a significantly decreased size and weight. In addition to working as a standard headstage the S-Probe can also measure the potential difference between a third electrode (reference) and the ground (counter) electrode without having current flowing through the reference electrode.

The S-Probe is ideal for use with an EPC 10 USB revision N or higher, the EPC 10 revision O or higher and the PG 618 USB. It is also compatible with the EPC 800 USB if the bath sense option is not required. Contact our support team for details.

PATCHMASTER NEXT



EPC 10 USB



EPC 800 USB

