

# BioPen® PRIME & FLEX

*Microfluidic system for targeting single cells*

# BioPen PRIME & FLEX



## Control the cellular microenvironment one cell at the time

**BioPen PRIME** and **BioPen FLEX** systems are easy-to-use microfluidic devices for maintaining **local delivery** of molecules to single cells, **enabling control of the chemical environment** around single intact cells in tissue or cell cultures.

## Unique and critical data from single cells

Collect unprecedented data quality at high resolution by controlling **how much**, **when** and **where** your reagents meet your cells.

## Precise control



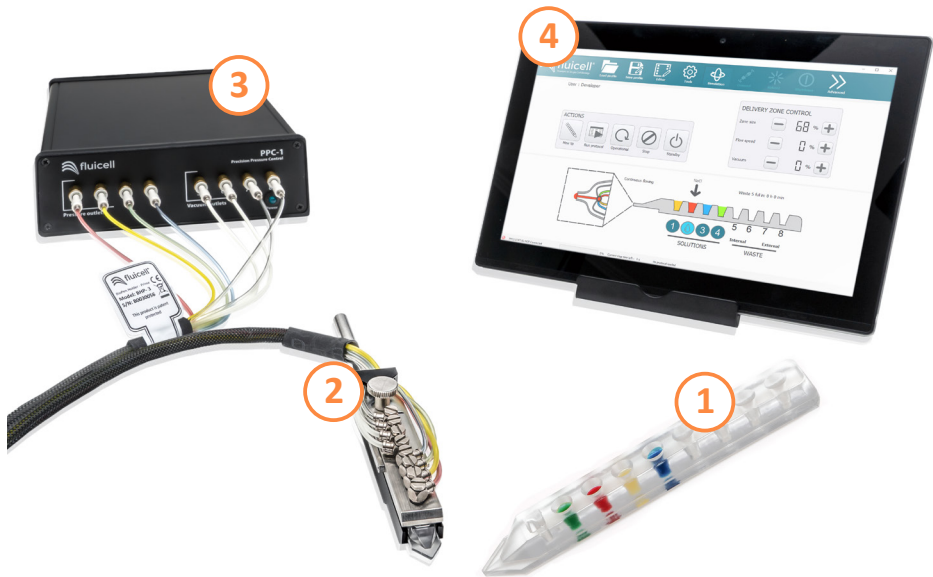
How much



When



Where



## 1- DISPOSABLE PIPETTE TIP

The pipette tip is made from of a flexible medical grade elastomer and can be used to deliver up to 4 different solutions. Two types of tips are available: PRIME and FLEX.

## 2- PIPETTE HOLDER

The pipette holder connects each solution well of the pipette tip individually with the pressure controller. It has been designed to be compatible with any standard type of micromanipulator. Two types of holders are available: PRIME and FLEX.

## 3- PRESSURE CONTROLLER

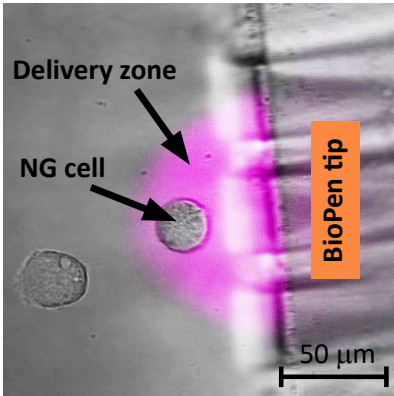
The pressure controller contains pressure and vaccum sources, with fast solution switching achieved through the use of miniature solenoid valves. External communication is possible using standard TTL signals.

## 4- SOFTWARE

The software enables facile configuration and use of the BioPen® system. The Windows-based BioPen® software allows independent control of each pressure line and solution delivery. It also includes a scripting module for automation of common tasks.

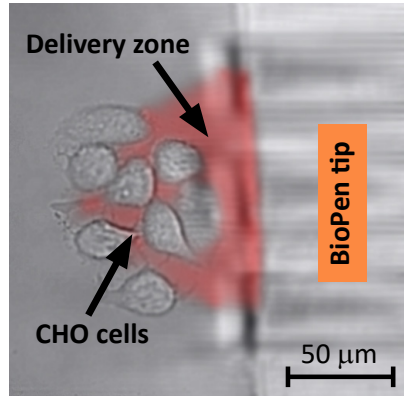
Deliver reagents locally to a single-cell or a group of cells, without contaminating the whole sample

**SINGLE-CELL**



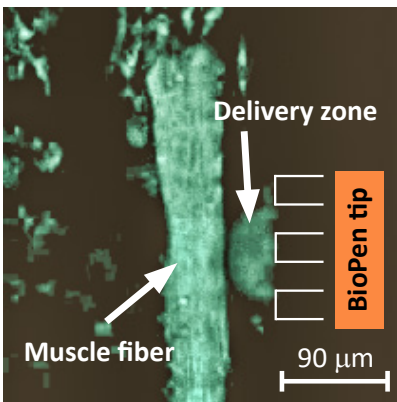
Localized delivery to a NG single-cell

**GROUP OF CELLS**



Localized delivery to a group of CHO cells

**MUSCLE FIBER**

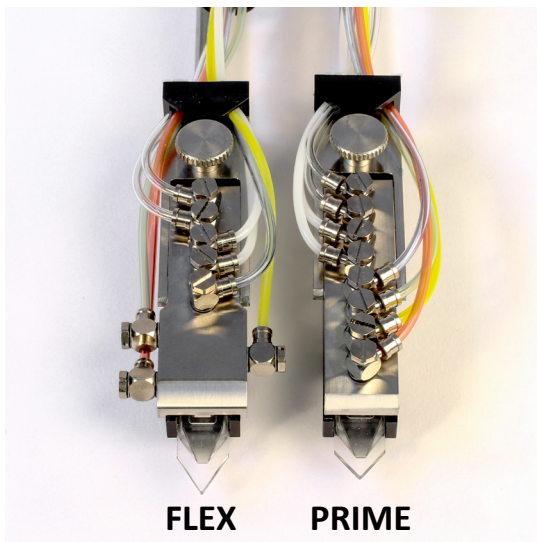


Localized delivery to a muscle fiber



More information and applications at [www.fluicell.com](http://www.fluicell.com)

## Find the best BioPen Systems for your application needs



	<b>FLEX</b>	<b>PRIME</b>
Description	<i>For experiments using upright microscopes</i>	<i>For experiments using inverted microscopes</i>
Length of the tip	68 mm	65 mm
Holder height	13 mm	23 mm
Switching Time	500 ms	200 ms

The BioPen FLEX and BioPen PRIME systems are interchangeable component platforms; choose the holder and the pipette tip suitable for you.

Contact us if you need more information at [info@fluicell.com](mailto:info@fluicell.com)

 Flöjelbergsgatan 8C  
SE - 431 37 Mölndal, Sweden

 [www.fluicell.com](http://www.fluicell.com)

 [info@fluicell.com](mailto:info@fluicell.com)