

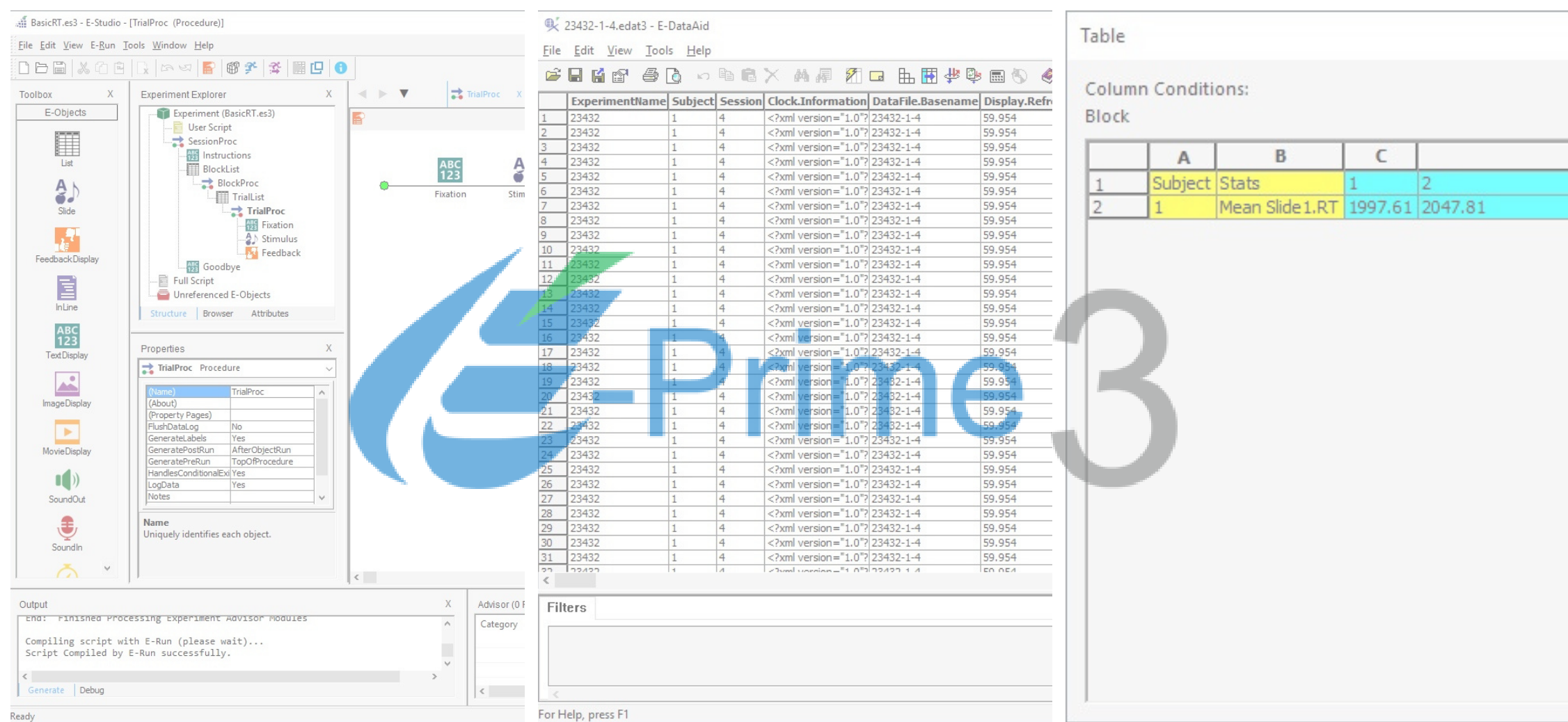


# -Prime

# 3



**PSYCHOLOGY  
SOFTWARE TOOLS**  
*Solutions for Research, Assessment, and Education*



**DESIGN.**

**COLLECT.**

**ANALYZE.**

OVERVIEW

E-Prime® is the most comprehensive software available for behavioral research. Build your own experiments using E-Prime's easy-to-use graphical interface. Design, collect, and analyze data - all within a few hours! With more than 100,000 users in research institutions and laboratories in over 60 countries, E-Prime is the world-leading behavioral experiment software. E-Prime provides a truly easy-to-use environment for computerized experiment design, data collection, and analysis. E-Prime provides millisecond precision timing to ensure the accuracy of your data. E-Prime's flexibility to create simple to complex experiments is ideal for both novice and advanced users.

## NEW FEATURES IN E-PRIME 3

- Support for tablets and touchscreens
- Button sub-object
- Choice and Slider sub-objects
- Slide Layout Templates
- Online Experiment Library
- Auto-generate text data files
- Interactively run Lists
- Execute script in Task Events
- Property find and replace
- Start experiment from any List
- Debug experiment in floating window
- Improved audio/video playback
- New Task Events
- Improved user interface
- Online Documentation

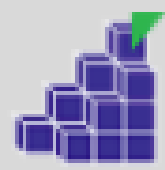




E-Prime® allows you to send and receive triggers with external devices, including:

- |                          |                    |
|--------------------------|--------------------|
| • EEG/ERP                | • Tactile Response |
| • fNIRS                  | • Olfactory        |
| • Eye Tracking           | • Gustatory        |
| • fMRI                   | • EMG              |
| • ECG                    | • Pneumograph      |
| • MEG                    | • Shock            |
| • Galvanic Skin Response |                    |

## E-Prime Suite of Applications



### E-Studio

The graphical interface makes creating experiments as easy as dragging and dropping objects onto procedural time lines!



### E-DataAid

This application is a data management utility specific to E-Prime. It features the ability to filter, edit, analyze, and export data to external statistical packages.



### E-Run

Once your experiment is compiled, E-Run affords you the millisecond precision of stimulus presentation, synchronizations and data collection.



### E-Recovery

This application allows you to select an incomplete E-Run text file and convert it into an E-Prime data file.



### E-Merge

This application allows you to quickly and easily combine your single-subject data files into multi-subject data files.



### E-Basic

Nearly identical to Visual Basic for Applications™, E-Basic is the underlying scripting language of E-Prime.



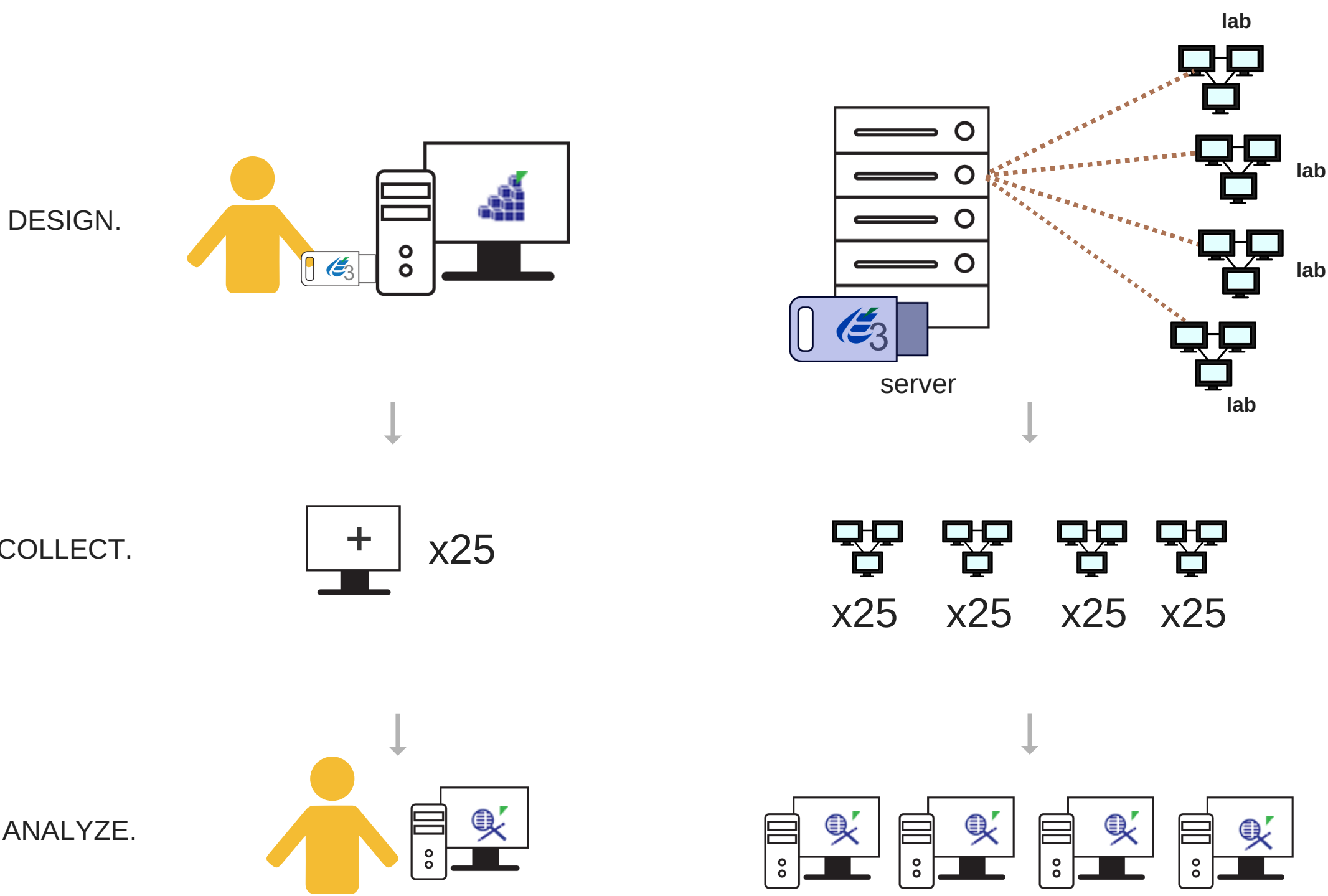
## DESIGN. COLLECT. ANALYZE.

E-Prime® is the only behavioral research software that offers a comprehensive suite of programs complete with the tools needed for every stage of the research process. This allows researchers to design, collect, and analyze data - all within E-Prime.

SINGLE USER

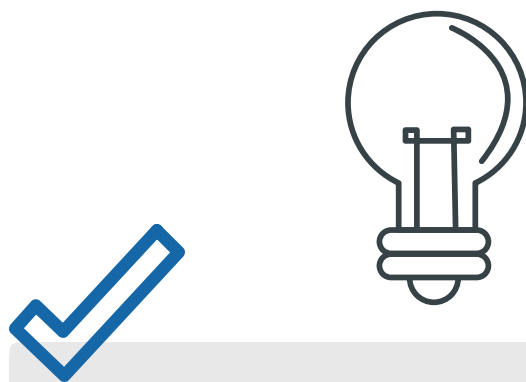
NETWORK

	Allows an individual investigator to quickly and easily take his/her research from design to data analysis. The Single User License is perfect for a single investigator set-up.	The E-Prime 3.0 network key plugs into a server or network-attached server machine. This allows any computer connected to the network to access E-Prime without the need for the USB key.
Number of installations	25	25 per seat
Design machines	1 at a time	Multiple machines simultaneously
USB key required for design	Yes	No
USB key required for data collection	No	No
Free additional Single User License	No	1 per 5 seats * max of 5 additional licenses
Quantity discounts	No	Discount increases with number of seats



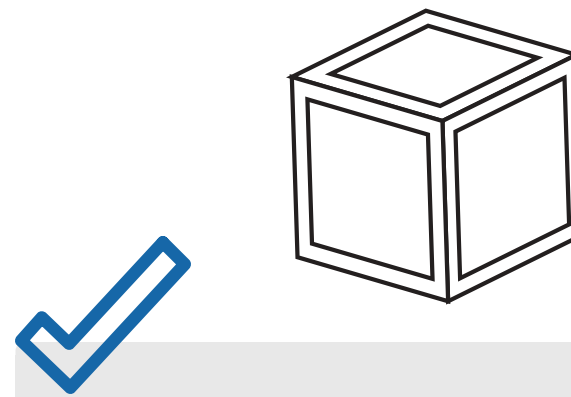
\* Runtime License electronically available for data collection at remote sites. Experiment development, editing and data analysis are not possible with a Runtime License only.





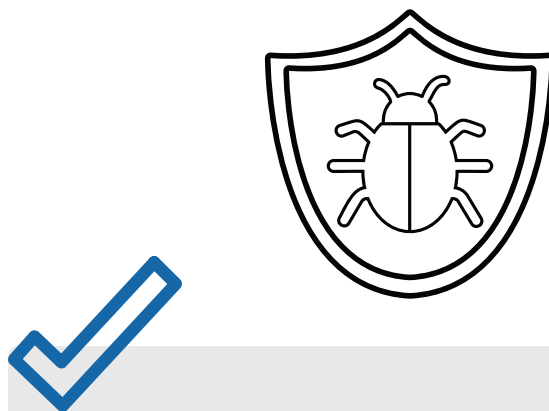
### INTUITIVE DESIGN

- Design complete experiments without programming
- Drag and drop objects to build experiments
- Design with text, images, movies, sounds, sliders, multiple choice, buttons
- Present performance feedback without script
- Use pre-built experiments and templates
- Choose between a variety of sampling methods



### CUSTOMIZATION

- Present experiments on multiple monitors
- Record participant vocalizations
- Find and replace property values
- Choose preferred amount of data logging
- Create more advanced designs with scripting
- Share common experiment operations using package files



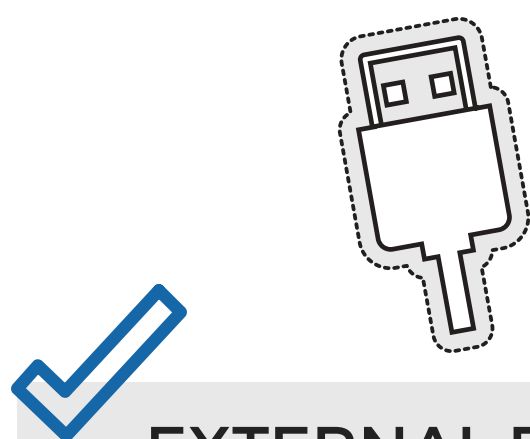
### DEBUGGING

- Test at faster speeds with auto response
- Run in a floating window with real-time debugging
- Review Advisor Report to identify experiment design issues
- Start an experiment from any List for quicker debugging



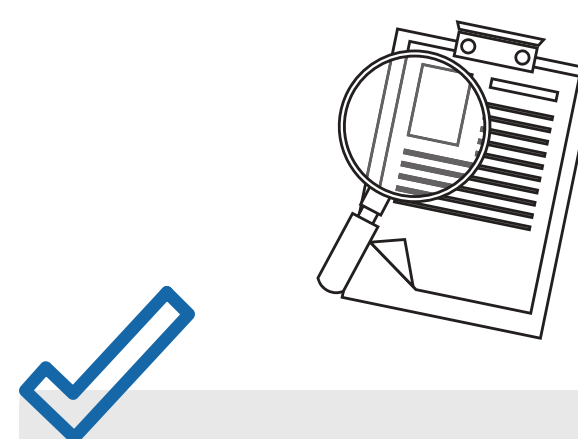
### TIMING

- Millisecond accurate stimulus presentation and response times
- Use event or cumulative timing mode
- Avoid response latencies from input devices by using Chronos®
- Extensive timing data reports available online



### EXTERNAL DEVICE INTEGRATION

- Connect to Chronos for intuitive digital or analog communication
- Send triggers and markers without script using Task Events
- Send and receive triggers and markers via socket, serial, or parallel port
- Create drag and drop package calls with PackageFile Editor
- Communicate with joysticks using X/Y coordinates and buttons



### DATA ANALYSIS

- Data available in E-DataAid format as well as .TXT
- Save preferred data layout for each experiment
- Merge participant and session data files into one file
- Be aware of data that has been edited
- Perform descriptive analyses and auto-generate Excel plots and tables
- Export data for inferential statistics in SPSS, R, and Excel

## FREE SUPPORT RESOURCES



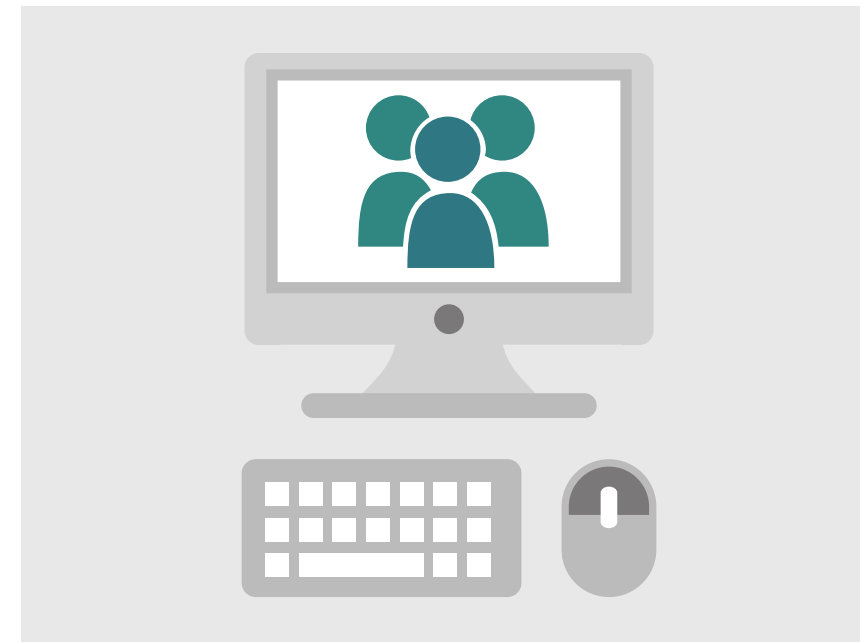
### PST

- Knowledge Base
- Experiment Library
- Samples



### SOCIAL

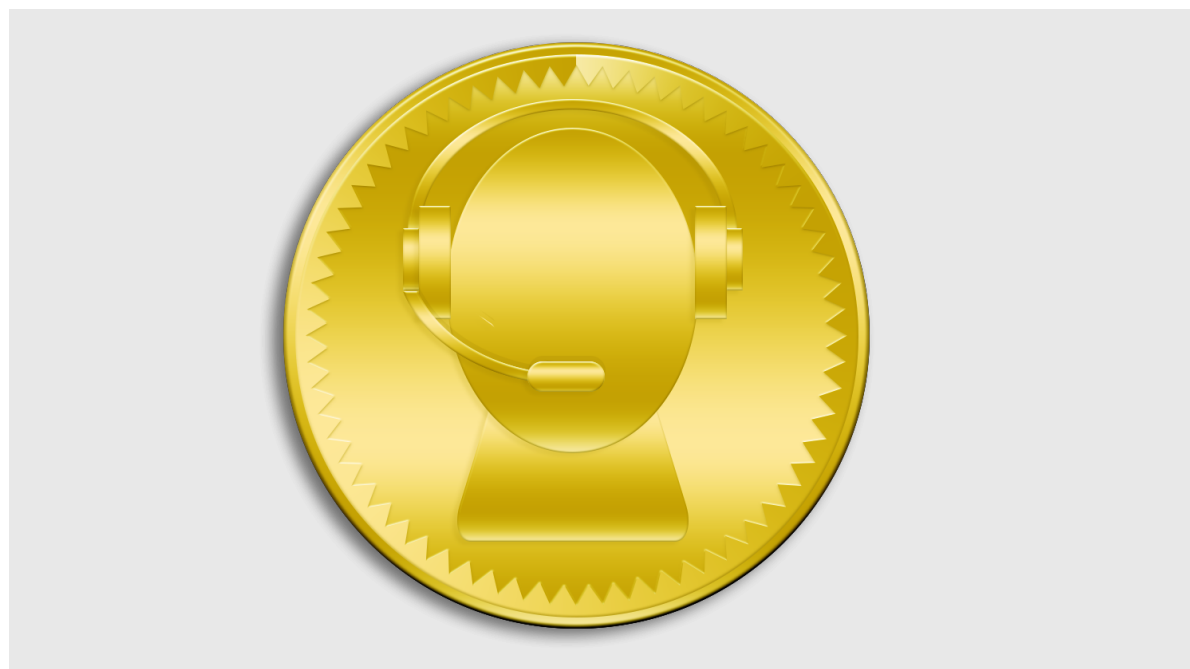
- YouTube
- Twitter
- Facebook
- LinkedIn
- Instagram



### COMMUNITY

- User Forum
- Google Group

## PRODUCT SERVICE AND SUPPORT



### GOLD SUPPORT

- **\$145 for first year when purchased with new E-Prime License, \$195/year each year after**
- Access to Knowledge Base, Samples, User Forum
- Bug Fixes and Service Packs
- Minor Updates
- Five Support Accounts
- Unlimited Support Access via Web, Email, Facebook, Twitter
- Three Phone Support Incidents
- 1-Day Response Time Guaranteed
- Live Chat with Technical Consultant
- Remote Access



### SILVER SUPPORT

- **Free for first 3 years of E-Prime License purchase, \$35/year each year after**
- Access to Knowledge Base, Samples, User Forum
- Bug Fixes and Service Packs
- Minor Updates
- Two Support Accounts
- Up to 2-Day Response Time
- Unlimited Support Access via Web, Email, Facebook, Twitter

# CHRONOS™

Chronos is a powerful USB-based response and stimulus device that is automatically detected by E-Prime, making integration seamless. Chronos allows the accurate collection and verification of tactile, auditory, visual, and analog responses along with the precise source of audio and generic analog output timing.

CHRONOS



## USING CHRONOS WITH E-PRIME

### As a Response Device:

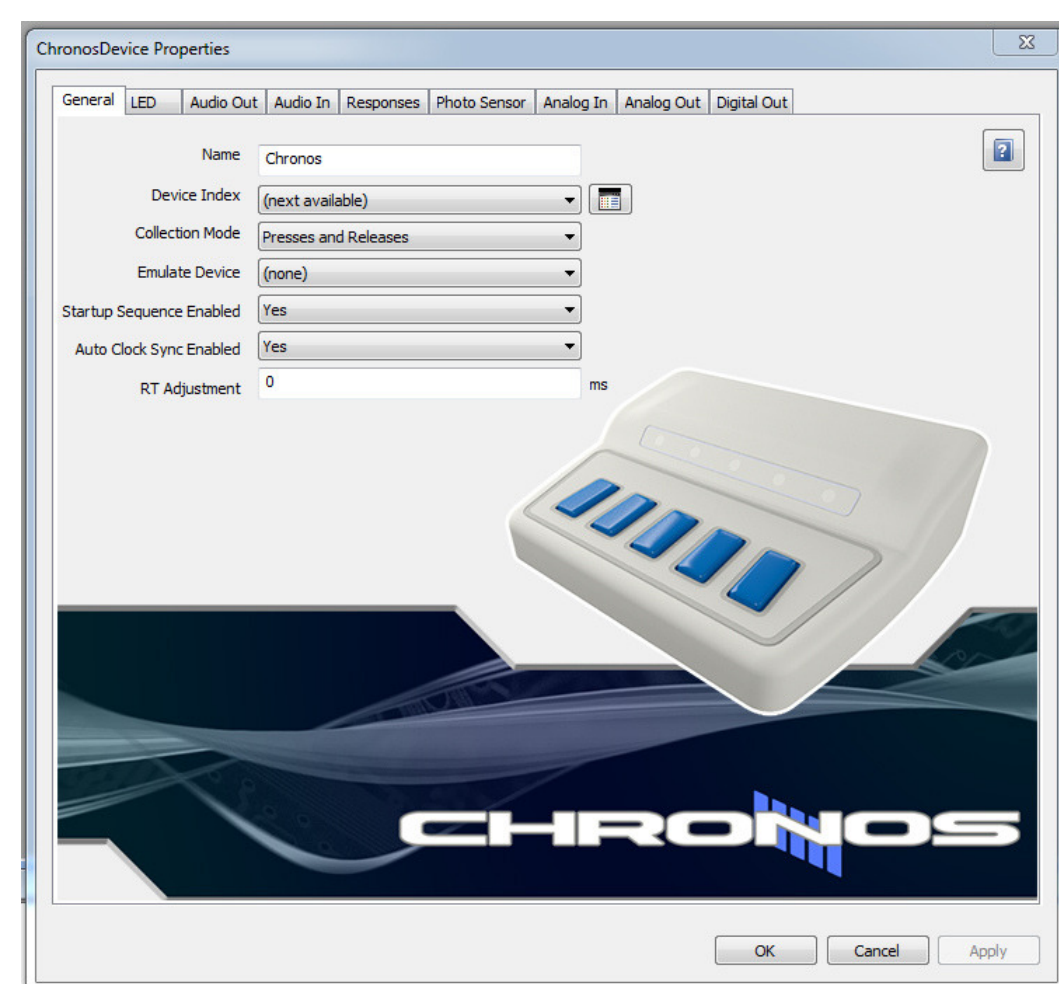
The response latency of a mouse or keyboard can average 15 ms. However, E-Prime and Chronos, when used together, deliver millisecond-accurate stimulus presentation, responses, and sound output.

### For Sound Output:

Chronos is able to provide consistent sound output latency across machines. This ensures that experimental precision is maintained even if using different machines in the lab.

### To Communicate with External Devices:

Chronos can be used to send and receive triggers from external systems (such as EEG, MRI, fNIRS, and other biometric measurement systems). When paired with the Task Events feature in E-Prime, synchronization with these systems is simple, precise, and accurate.



*\*for technical specifications, please request a copy of our Chronos product sheet*



## EXTENSIONS FOR E-PRIME

Extension packages are available for the integration of E-Prime® with eye tracking, fMRI, and EEG. E-Prime Extension packages allow for enhanced control over your experiment, data collection, and analysis.



### Drag + Drop Capability

Easily drop Package  
Calls onto your experiment  
structure to eliminate the  
need to write complex script



### Enhanced Timing

Every extension is  
integrated into the core of  
the E-Prime Runtime for  
precise and accurate timing



### Higher Quality Data Output

E-Prime sends markers to  
partner software for  
smoother data analysis

Here are some of the E-Prime® Extension options we currently have available:



Software designed to optimize E-Prime®  
experiments for fMRI research



Allows communication between Net  
Station and E-Prime® during the run  
of an experiment



Combines the power of E-Prime® with  
easy to use Tobii eye trackers



Software designed to optimize E-  
Prime® experiment communication  
with Brain Products EEG systems



Adds SMI eye gaze and eye  
movement capabilities to existing and  
novel E-Prime® experiments



Create or update existing E-Prime®  
experiments to function with the Smart  
Eye eye tracker device





**More than 100,000 users in research institutions and laboratories in over 60 countries use E-Prime®.**



**E-Prime® is used in all of the top 50 Psychology departments in the world**

[QS World University Rankings - 2012]

**and all of the top 25 graduate Psychology programs in the United States**

[USNews Ranking and Reviews]

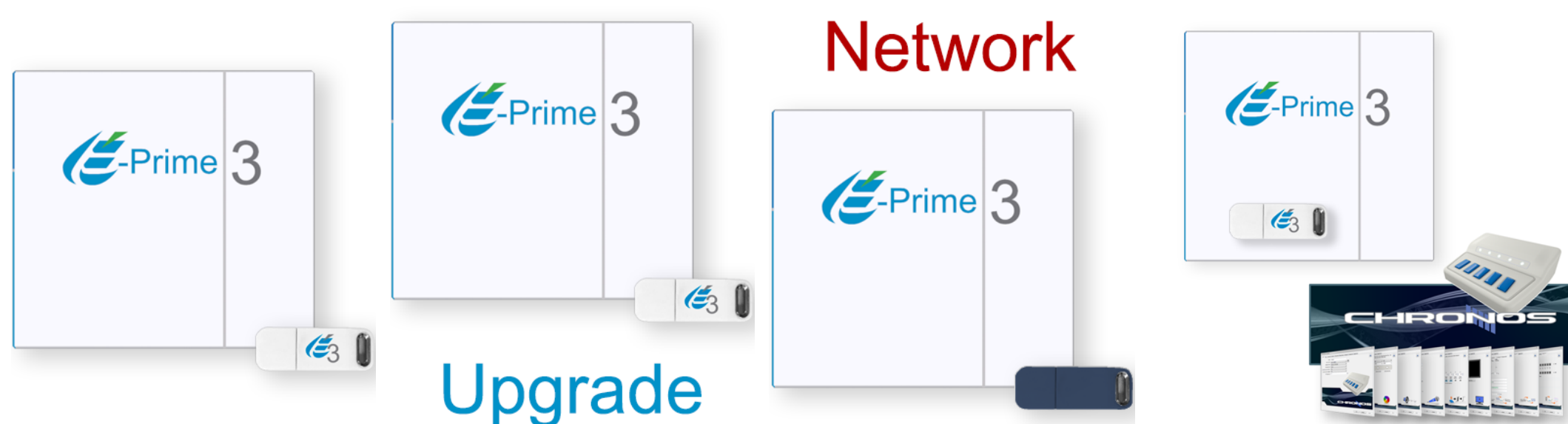
**including the following reference sites:**

Harvard University   University of California - San Francisco   University College London   Stanford University  
University of California - Los Angeles   University of Oxford   University of Cambridge   Johns Hopkins University  
University of Pennsylvania   Yale University   Washington University in St. Louis   New York University   University of Toronto  
Kings College London   McGill University   Karolinska Institute   University of California - Berkeley   University of Washington  
Duke University   University of Pittsburgh   Imperial College London   University of Melbourne  
Mount Sinai School of Medicine   Northwestern University   Emory University  
National Institutes of Health   U.S. Veterans Administration   NASA  
U.S. Army   U.S. Navy   U.S. Air Force



**E-Prime® and other PST products may be purchased through the shopping cart on our website ([www.pstnet.com](http://www.pstnet.com)).**

To try the evaluation platform of the newest version of E-Prime, please visit our website and fill out the request form.



Additionally, our Solutions team can be reached by contacting PST via phone (412.449.0078), fax (412.449.0079), or email ([sales@pstnet.com](mailto:sales@pstnet.com)). To provide a quotation, our team will need the following information:

- Name
- Institution
- E-mail Address
- Shipping Address
- Phone Number
- Product(s) of Interest

*For international customers, purchases may also be made through the PST Global Re-seller Network. Please visit our website to find a re-seller near you.*

## ABOUT US

Psychology Software Tools, Inc. was founded with the vision of creating innovative and affordable technologies and solutions which improve the efficacy of human behavioral research, assessment, and education. Our goal is to consistently provide products and services to our customers which increase their productivity, effectiveness, and confidence in addressing the challenges they face in these diverse disciplines.

